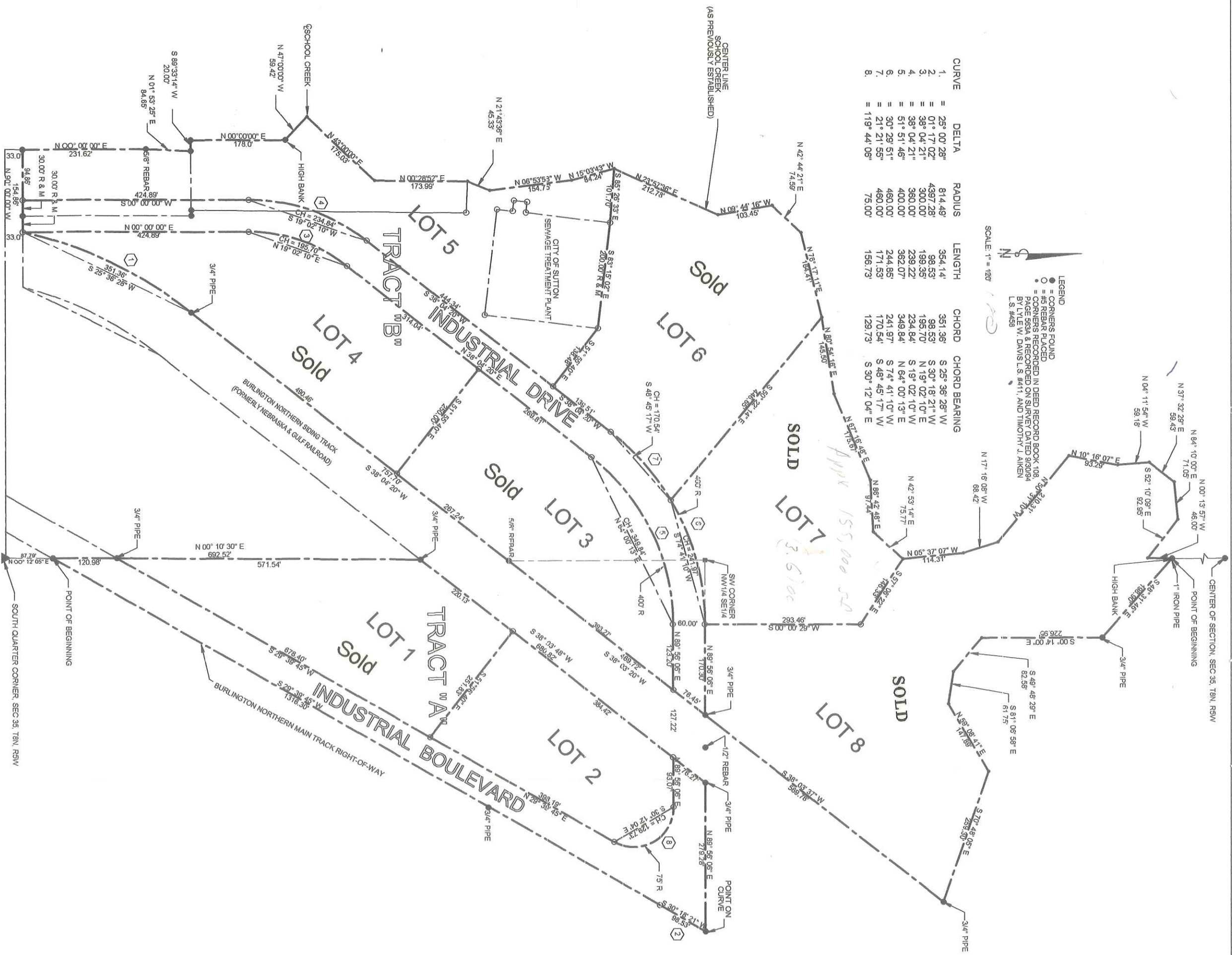


CURVE	DELTA	RADIUS	LENGTH	CHORD	CHORD BEARING
1.	= 25° 00' 28"	= 814.49	= 354.14'	S 25° 36' 28" W	
2.	= 01° 17' 02"	= 4397.28'	= 98.53'	S 30° 18' 21" W	
3.	= 38° 04' 21"	= 300.00'	= 199.35'	N 19° 02' 10" E	
4.	= 38° 04' 21"	= 360.00'	= 239.22'	S 19° 02' 10" W	
5.	= 51° 51' 46"	= 400.00'	= 362.07'	N 64° 00' 13" E	
6.	= 30° 29' 51"	= 460.00'	= 244.85'	S 74° 41' 10" W	
7.	= 21° 21' 55"	= 460.00'	= 171.53'	S 48° 45' 17" W	
8.	= 119° 44' 06"	= 75.00'	= 156.73'	S 30° 12' 04" E	



LEGEND
 ● = CORNERS FOUND
 ○ = 4#8 REBAR PLACED
 ○ = CORNERS RECORDED IN DEED RECORDED BOOK 108 PAGE 5634 & RECORDED ON SURVEY DATED 9/20/04 BY LYLE W. DAVIS L.S. #411, AND TIMOTHY J. AIKEN L.S. #459



SUTTON INDUSTRIAL PARK

KATT SURVEYING, 1008 S "F" ROAD, AURORA, NEBRASKA